

Refractories for cement industry

Products and applications

Refrattari per l'industria del cemento

Prodotti ed applicazioni

lincobaxo

group of companies



2009 1st issue



Refractories

www.lincobaxo.com



Linco Baxo industrie refrattari spa
Corporate Headquarters
Via C. Boncompagni 51/8 / I-20139 Milano
Tel. +39-02-5520041 / Fax +39-02-5694834
E-mail info@lincobaxo.com



Linco Baxo industrie refrattari spa
Levate plant - Linco Baxo monolithics
Via Caravaggi / I-24040 Levate (BG)
Tel. +39-035-594049 / Fax +39-035-594692
E-mail info@lincobaxo.com



Linco Baxo industrie refrattari spa
Bondeno plant - Maref bricks and shapes
Via M. Borgatti 96 / I-44012 Bondeno (FE)
Tel. +39-0532-892235 / Fax +39-0532-892758
E-mail marefcomm@lincobaxo.com



Linco Baxo industrie refrattari spa
Via G. Verga / I-10036 Settimo Torinese (TO)
Tel. +39-011-8005002 / Fax +39-011-8006596
E-mail settimo@lincobaxo.com



Linco Baxo industrie refrattari spa
Via III Strada 12 / I-35026 Conselve (PD)
Tel. +39-049-5352357 / Fax +39-049-9501544
E-mail triveneta@lincobaxo.com



Linco Baxo precision refractories srl
Headquarters
Via C. Boncompagni 51/10 / I-20139 Milano
Tel. +39-02-55249783 / Fax +39-02-56610773
E-mail tecref@lincobaxo.com



Linco Baxo precision refractories srl
Bondeno plant - Tec Ref products for glass and ceramic
Via per Zerbinata 34/G / I-44012 Bondeno (FE)
Tel. +39-0532-898299 / Fax +39-0532-891299
E-mail tecref@lincobaxo.com



Linco Baxo Austria
Wittgensteinstraße 26 / A-9524 Villach
Tel. +43 (0) 664-3004512 / Fax +43 (0) 4242-46182
E-mail c.penzias@lincobaxo.com



Linco Baxo Benelux b.v.
P.O. Box 890 -5048 AH Tilburg -The Netherlands
Tel. +31-13-4624090 / Fax +31-13-4624099
E-mail info@lincobaxo.nl



Linco Baxo China Ltd
Suite 1301, Unit 4, building 1, Fengniao Jiayuan, Haidian
District, Beijing, China
Tel. +86-10-82860539 / Fax: +86-10-82860529
E-mail china@lincobaxo.com



Baxo GmbH
Kamper Weg 228A / D-40627 Düsseldorf
Tel. +49 (0) 211-926161 / Fax +49 (0) 211-273660
E-mail info@baxo.de



Industrial Technologies & Engineering srl
Via C. Boncompagni 51/10 / I - 20139 Milano
Tel. +39-02-57400346 / Fax +39-02-57400670
E-mail ite@lincobaxo.com

RANGE OF PRODUCTS FOR CEMENT INDUSTRY

GAMMA PRODOTTI PER INDUSTRIA DEL CEMENTO



LINCO BAXO industrie refrattari - Bondeno Plant

BRANDNAME	DESCRIPTION	PAGE
LICOFEST BAXOVIBRO KEROFLOW LICOCLAY	Unshaped refractories (castables & mouldables) Refrattari monolitici (calcestruzzi & plastici)	4-5
MAREF CARBO ISOM	Refractory / insulating bricks and shapes Mattoni / sagomati refrattari ed isolanti	6
LM FIBRES SILTHERM BASALAN PARGAS	Ceramic & soluble fibres, insulating boards Fibre ceramiche & solubili, pannelli isolanti	7
MAREF	Bricks shapes for cement kiln Mattoni per forno da cemento	8-9
	Metallic and ceramic anchors Ancoraggi metallici e ceramici	10
	Applications Applicazioni	11-15

The informations provided in this leaflet are based on the results of routine production tests; as such are subject to slight variations and therefore should not be used as a specification. The figures are correct at the time of publishing (June 2009). Variations to standard products may cause deviations from the figures in this catalogue (June 2009).



LINCO BAXO industrie refrattari - Levate Plant

REFRACTORY CASTABLES & MOULDABLES

CALCESTRUZZI REFRAATTARI & PLASTICI

	Brandname	Chemical Analysis			Classification temperature	BD	CCS 1300 °C
		Al ₂ O ₃ %	Fe ₂ O ₃ %	SiO ₂ %	°C	kg/m ³	N/mm ²
DENSE CASTABLES	LICOFEST 28	47	1,5	44	1450	2000	40
	LICOFEST 37	66	0,9	27	1600	2290	40
	LICOFEST 1600 0-10 QH	87	0,8	27	1600	2350	50
	LICOFEST H 82	86	1	6	1700	2650	40
	LICOFEST KOR 94	94	0,4	0,5	1730	2960	>130
	LICOFEST 42	96	0,1	0,1	1800	2750	50
	LICOFEST H 95	95	0,1	0,2	1750	2790	65
LC CASTABLES	LICOFEST PL 320	51	0,8	45	1500	2150	70
	BAXOVIBRO VT 336	58	1	36	1600	2485	90
	BAXOVIBRO LB	65	0,5	31	1650	2490	70
	BAXOVIBRO VT 820	83	0,8	9	1700	2800	>120
	BAXOVIBRO VT 1750	84	1,5	11	1750	2830	>120
	BAXOVIBRO VT 95 TAB	95	0,2	3	1800	3000	>130
CASTABLES BASED ON ZrO ₂	BAXOVIBRO VT ZMX SUPER	54	26 (ZrO ₂)	16	1670	3000	160
	LICOFEST PL ZM X	56	27 (ZrO ₂)	12	1670	2740	90
	LICOFEST PL Z4	50	30 (ZrO ₂)	16	1670	3150	140
LC CASTABLES BASED ON SiC	BAXOVIBRO LB SiC	60	5 (SiC)	31	1650	2500	80
	BAXOVIBRO LB SiC 10	56	10 (SiC)	30	1650	2565	80
	BAXOVIBRO VT 35 SiC	35	34 (SiC)	28	1600	2510	95
	LICOFEST SiC 60 CL	32,5	59 (SiC)	6	1600	2510	125
	LICOFEST SiC 70 CL	11,5	70 (SiC)	14	1600	2550	128
	LICOFEST SiC 85 CL	8	84 (SiC)	5	1600	2560	85
SELF-FLOWING MIXES	KEROFLOW SiC 60	38	55 (SiC)	5	1500	2500	80
	KEROFLOW SiC 35	48	35 (SiC)	15	1500	2400	80
	LICOFEST ZR 291 SF	71	10 (ZrO ₂)	14	1650	2850	90
	LICOFEST 791 SF	80	1	14	1650	2850	90
	KEROFLOW B 06/6	90	0,8	3	1650	3010	120
	KEROFLOW T 04/7	97	0,04	0,08	1800	3185	130
PLASTIC MOULDABLES	LICOCCLAY X 36	52	1	44	1600	2350	40
	LICOCCLAY X 37	60	1	38	1650	2450	45
	LICOCCLAY X 39	81	1,3	14	1720	2650	60
	LICOCCLAY X 41	86	0,9	10	1750	2800	45
	LICOCCLAY X 415	90	0,4	10	1800	2900	75

	Brandname	Chemical Analysis			Classification temperature	BD	CCS	
		Al ₂ O ₃ %	Fe ₂ O ₃ %	SiO ₂ %	°C	kg/m ³	°C	N/mm ²
GUNNING CASTABLES	LICOFEST 32 G TR	52	0,8	39	1520	2060	1300	50
	LICOFEST 33 G TR	57	0,8	33	1550	2080		55
	LICOFEST AT 65	66	0,9	26	1600	2320		55
	LINAX 70	71	1,3	22	1600	2160		18
GUNNING CASTABLE BASED ON SiC	LICOFEST 33 G SiC	56	6 (SiC)	29	1550	2350	1300	65
	LICOFEST SiC V 30 TR	40	30 (SiC)	25	1400	2150		48
	LICOFEST SiC V 60 TR	26	60 (SiC)	8	1400	2300		45
	LICOFEST Z SiC TR	52	10 (SiC)	10 (ZrO ₂)	1580	2520		70
	LICOFEST Z G TR	50	0,5	27 (ZrO ₂)	1580	2800		50
LW-CASTABLES	LICOFEST 5V	31	10	32	1000	535	815	0,7
	LICOFEST L 09	29	9	44	1100	935	815	2,5
	LICOFEST LW 203 CH	40	6	36	1320	1215	815	6
	LICOFEST PC 14 HT	40	6	38	1370	1410	815	11
	LICOFEST FL 60	59	1,5	33	1580	1500	1300	13
COATING	BAXOCOAT Z	60 (ZrO ₂)	0,3	30	1650	3000	-	-
	BAXOCOAT SiC	5	0,9	85 (SiC)	1650	2500	-	-

ALCALI: IL NEMICO N.1 NEI FORNI DA CEMENTERIA

ALKALI: ENEMY No 1 OF CEMENT KILNS

Nei forni da cementeria uno dei problemi maggiori è la corrosione e l'incrostazione dei refrattari dovuta agli alcali.

Il fenomeno è il seguente: gli alcali come K₂O (ossido di potassio) e Na₂ (ossido di sodio) provenienti dalla materia prima in ingresso, reagiscono con le varie tipologie di combustibili attualmente in uso formando nuovi componenti quali K₂SO₄ (solfato di potassio) e KCl (cloruro di potassio).

Nelle zone statiche inferiori, quali testata e raffreddatore, tali componenti penetrano il refrattario e in temperatura (tra 800 °C e 900 °C) condensano, reagiscono con Al₂O₃ e SiO₂ formando nuovi componenti bassofondenti che tendono a gonfiarsi/ingrandirsi, anche fino al 50%.

Tale fenomeno porta a parziale caduta di lastre/blocchi dalla muratura refrattaria ("spalling").

Nelle zone statiche "superiori" quali la torre, il calcinatore, la camera di transizione (zona ingresso forno) gli alcali formano invece una superficie molto viscosa, quindi appiccicosa, sulla quale si depositano e attecchiscono alcali, polveri e parti fini della materia prima in ingresso nel forno, formando grossi aggrappi "build-up"; tali incrostazioni sono molto difficili da eliminare e di fatto rallentano o impediscono la produzione.

Al fine di eliminare questi "build-up" diventa quindi necessario intervenire con lance ad altissima pressione, assieme all'uso di air-shock "blower", danneggiando il più delle volte anche il refrattario sottostante.

Per superare questo problema **Linco Baxo** ha sviluppato una vasta gamma di materiali a bassa porosità a base di SiC o ZrO₂. Tali materiali sono caratterizzati da ottima resistenza all'attacco degli alcali, eccellenti resistenze all'abrasione e meccaniche. In temperatura questi prodotti, per reazione chimica formano una struttura vetrosa chiudendo tutte le porosità e impedendo l'attacco degli alcali; se comunque ciò accadesse l'eventuale reazione fra fase vetrosa e alcali, non porterebbe al rigonfiamento o al build-up.

Di fatto gli alcali non penetrando nel rivestimento refrattario tendono a crollare sotto l'effetto del proprio peso. Il rivestimento refrattario non è quindi danneggiabile. I nostri materiali sono stati utilizzati con successo in impianti in cui gli alcali rappresentavano un grave problema. I build-up sono stati eliminati e le operazioni sono migliorate.

Linco Baxo è in grado di offrire ai propri clienti una gamma completa di prodotti, con un SiC o ZrO₂ con contenuto che varia dal 5% al 85%, a bassa porosità e specifici per resistere all'attacco degli alcali. La corretta scelta del materiale da utilizzare dipende dalle condizioni di esercizio dell'impianto che sappiamo variare da forno a forno.

One of main the problems in cement kilns is the build-up and corrosion of refractories caused by alkali.

The reaction is as follows: Alkali such as K₂O (potassium oxide) and Na₂O (sodium oxide), which are introduced to the kiln by the raw materials, react with the different types of fuels which are used in producing new elements, such as K₂SO₄ (potassium sulphate) and KCl (potassium chloride).

In lower static units (firing hood, cooler, etc.) these alkali penetrate the refractories at high temperatures (varying between 800 and 900 degrees), condense, and react with Al₂O₃ and SiO₂, forming new phases with low melting points. This leads to swelling of up to 50% and subsequently to deformation/spalling of the refractories.

In upper static units, the reaction leads to the formation of a gluey surface, on which alkali, dust and fine particles of the raw material will deposit and attach, forming huge build-ups. These build-ups are very difficult to eliminate and they may slow down or prevent production.

In order to get rid of these build-ups it is then necessary to intervene with high pressure lances and shock blowers, often damaging the refractories underneath.

To overcome this problem, **Linco Baxo** has developed a range of low porosity castables, based on SiC or ZrO₂. These materials demonstrate excellent resistance to alkali salts and coating build-up. The principle is that the chemical reaction of SiC / ZrO₂ based castables, which takes place in temperature, forms a glass-phase on the surface which plugs into all open porosity and prevents swelling and build-up.

Since the alkali do not penetrate the refractory lining they will fall under their own weight, preventing damage to the refractory lining

Our materials have been used successfully in cement plants where alkali had been a serious problem. After applying our materials the build-ups were eliminated and the operations were improved.

Linco Baxo can offer their clients a comprehensive range of products, with an SiC / ZrO₂ content that varies from 5% to 85%, exhibiting very low porosity and tailored to withstand alkali corrosion. The correct choice of product depends on the working conditions of each kiln.

REFRACTORY BRICKS AND SHAPES

MATTONI E SAGOMATI REFRATTARI

	Brandname	Refractoriness °C	Chemical Analysis			Bulk density Kg/m ³	CCS N/mm ²	Main raw material
			Al ₂ O ₃ %	SiO ₂ %	Fe ₂ O ₃			
SILICO ALLUMINOSI	MAREF 32 AK	1660	32	61	1,5	2150	50	chamotte
	MAREF 34C	1690	34	60	2,00	2150	50	chamotte
	MAREF 42C	1730	41	56	1,60	2300	50	chamotte
	MAREF 44C	1760	44	46	1,50	2300	50	chamotte
	MAREF 45Y	1745	43	52	1,40	2300	50	premium grade fire clay
ALUMINA HIGH	MAREF 52C	1780	52	43	1,60	2400	50	chamotte/bauxite
	MAREF 60 CL	1790	62	30	1,80	2400	45	bauxite
	MAREF 62 C	1830	62	34	1,50	2350	50	chamotte/bauxite
	MAREF 65Y	1830	62	34	1,50	2400	50	chamotte/bauxite
	MAREF 72C	1855	72	24	1,50	2550	60	chamotte/bauxite
	MAREF 80C	1860	80		1,50	2800	75	chamotte/bauxite
	MAREF 85Y	1860	81	13	1,5	2750	70	bauxite
	MAREF 80 CB	1890	81	14	1,50	2900	80	bauxite
	MAREF 90 CB	1920	88	6	1,30	2950	90	bauxite/corundum
	MAREF 95 AT	2000	92	7	0,2	2900	100	tabular alumina
SIC	CARBO A 5	1830	37	51 (SiC)	0,6	2350	55	silicon carbide
	CARBO 75	1880	18	75 (SiC)	0,6	2500	50	silicon carbide
	CARBO 90 HD	1880	8	85 (SiC)	0,5	2600	85	silicon carbide
MAGNESITE	MAREF MC3	1770	3,7	76,8 (MgO)	8,6 (Cr ₂ O ₃)	2900	50	cromo-magnesite
	MAREF MC6	1800	4,3	82,9 (MgO)	5,00 (Cr ₂ O ₃)	2900	60	cromo-magnesite
	MAREF PERMAL 3	1800	6,1	88,9 (MgO)	1,9	2860	65	magnesite
	MAREF PERMAL7	1780	8	87,3 (MgO)	2	2850	70	magnesite

A complete group of shaped refractories manufactured in standard sizes and itemized shapes

INSULATING BRICKS

INSULATING BRICKS

	Brandname	Bulk density Kg/m ³	Standard		Classification temperature	Al ₂ O ₃ %	Fe ₂ O ₃ %
			ASTM	ISO			
INSULATING BRICKS	ISOM 23A	560	23	125.06L	1260	38	1
	ISOM 26	800	26	140.08L	1430	58	0,9
	ISOM 28	900	28	150.09L	1540	65	0,7
	ISOM 30	1050	30	160.10L	1650	73	0,5

CERAMIC & SOLUBLE FIBRES

FIBRE CERAMICHE E SOLUBILI

	Brandname	Description	Classification Temperature °C	BD Kg/m ³	Dimensions mm	
CERAMIC FIBRES	LM 1260	Rolls	1260	96-128-160	7320x610x6 7320x610x19 4880x610x38	14640x610x13 7320x610x25 3660x610x50
	LM 1430	Rolls	1430	96-128-160		
	LF 1260	Wool	1260		In bags	
	LF 1450	Wool	1450			
	LF 1600	Wool	1600			
	LV 12	Boards	1260	300	1200x1000x10-100	
	LV 14	Boards	1430	310		
	LP 1260	Paper	1260	200	Thickness 1/2/3/4/5	
	LP 1400	Paper	1400	210		
	L MOD 12	Modules	1260	160-220	300x300x50-100 other sizes on request	
	L MOD 14	Modules	1450			
	L MOD 16	Modules	1600			
	A365/A366	Steel anchors (4841)	1150		on request	
	HT-ANKER	Steel anchors (Si3-N4)	1800		on request	
SOLUBLE FIBRES	LM ECO 1200	Rolls	1100	96-128-160	7320x610x6/19/25 4880x610x38	14640x610x13 3660x610x50
	LP ECO	Paper	1100	210	Thickness 1/2/3/4/5	
	LV ECO	Boards	1100	350	1200x1000x10-100	
	LF ECO	Wool	1100		In bags	
	L MOD ECO 12	Modules	1100	128-200	300x300x50-100 other sizes on request	



INSULATING BOARDS

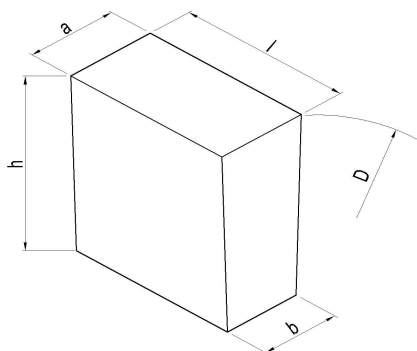
PANNELLI ISOLANTI

	Brandname	Description	Classification temperature °C	BD Kg/m ³	Dimensions mm	
BACK-UP INSULATION	SILTHERM 1000	Calcium silicate boards	1000	240	1000x500x25-100	500x500x25-100
	SILTHERM 1100	Calcium silicate boards	1100	275	1000x500x25-100	500x500x25-100
	BASALAN	Mineral wool boards	800	120-140	1000x600x25-100	
	PARGAS	Mineral wool boards	900	160-180	1000x600x25-100	
	MICROPOR	Microporous boards	950	300	1000x600x25-100	



BRICKS SHAPES FOR CEMENT KILN

FORMATO DEI MATTONI PER FORNO DA CEMENTO

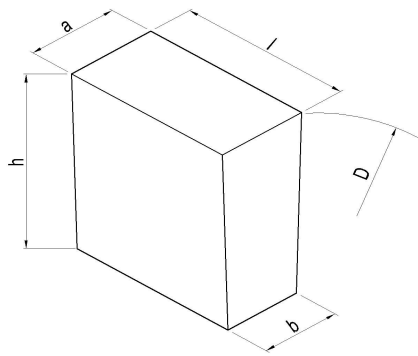


Unified shape with external conicity = 103 mm ($\pi/3$)
 Formato unificato con conicità esterna = 103 ($\pi/3$)

Code Sigla	Dimensions/Dimensioni mm				Radius	Diameter	Volume dm ³
	a	b	h	l	D/2 mm	D mm	
216		86			986	1971	2,99
316	103	92	160	198	1523	3046	3,09
416		94,5			1970	3940	3,13
516		96,5			2577	5154	3,16
218		84			992	1984	3,33
318	103	90,5	180	198	1507	3014	3,45
418		93,5			1983	3966	3,5
518		95,5			2512	5024	3,54
618		97			3141	6282	3,56
220		82			997	1994	3,66
320	103	89	200	198	1496	2991	3,80
420		92,5			1994	3988	3,87
520		94,7			2523	5046	3,91
620		96,2			3080	6159	3,94
720		97			3490	6980	3,96
820		97,8			4025	8050	3,98
322		88			1536	3071	4,16
422	103	91,5	220	198	2003	4006	4,24
522		94			2560	5119	4,29
622		95,5			3075	6149	4,32
722		96,5			3523	7046	4,35
822		97,3			4041	8082	4,36
425		90			2014	4027	4,78
525	103	92,7	250	198	2541	5082	4,84
625		94,5			3079	6158	4,89
725		95,5			3490	6980	4,91
825		96,5			4026	8052	4,94

BRICKS SHAPES FOR CEMENT KILN

FORMATO DEI MATTONI PER FORNO DA CEMENTO



Unified shape with average conicity = 71,5 mm (VDZ series)
 Formato unificato con conicità media = 71,5 mm (serie VDZ)

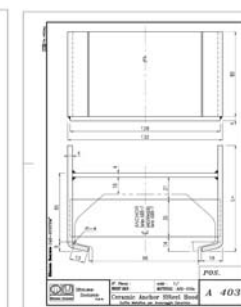
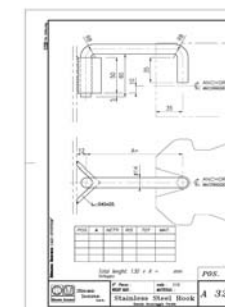
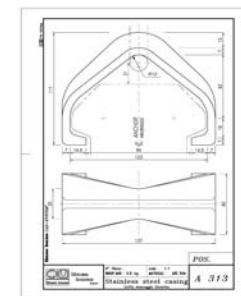
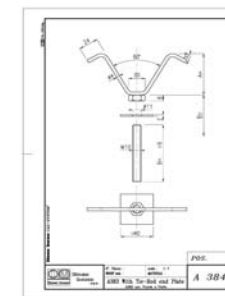
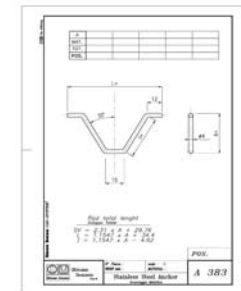
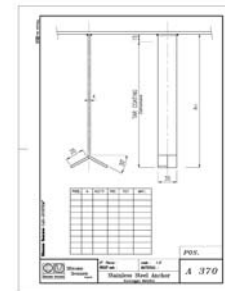
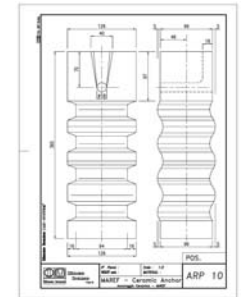
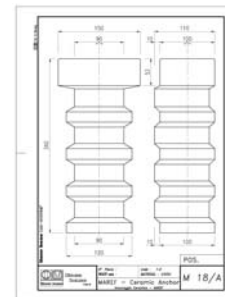
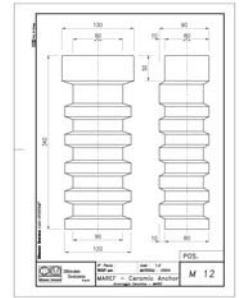
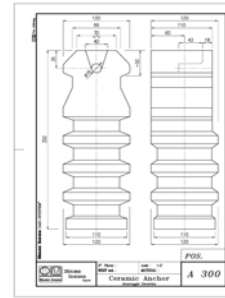
Code Sigla	Dimensions/Dimensioni mm				Radius	Diameter	Volume dm ³
	a	b	h	l	D/2 mm	D mm	
B 216	78	65	160	198	979	1957	2,27
B 416	75	68			1749	3497	
B 218	78	65	180	198	1101	2202	2,55
B 318	76,5	66,5			1404	2808	
B 418	75	68			1967	3934	
B 518	74,5	68,5			2280	4560	
B 618	74	69			2718	5436	
B 220	78	65	200	198	1223	2446	2,83
B 320	76,5	66,5			1560	3120	
B 420	75	68			2186	4371	
B 520	74,5	68,5			2534	5067	
B 620	74	69			3020	6040	
B 222	78	65	220	198	1345	2690	3,11
B 322	76,5	66,5			1716	3432	
B 422	75	68			2404	4808	
B 522	74,5	68,5			2787	5574	
B 622	74	69			3322	6644	
B 325	78	65	250	198	1529	3058	3,54
B 425	76,5	66,5			1950	3900	
B 525	75	68			2732	5464	
B 625	74,5	68,5			3167	6333	
B 725	74	69			3675	7350	

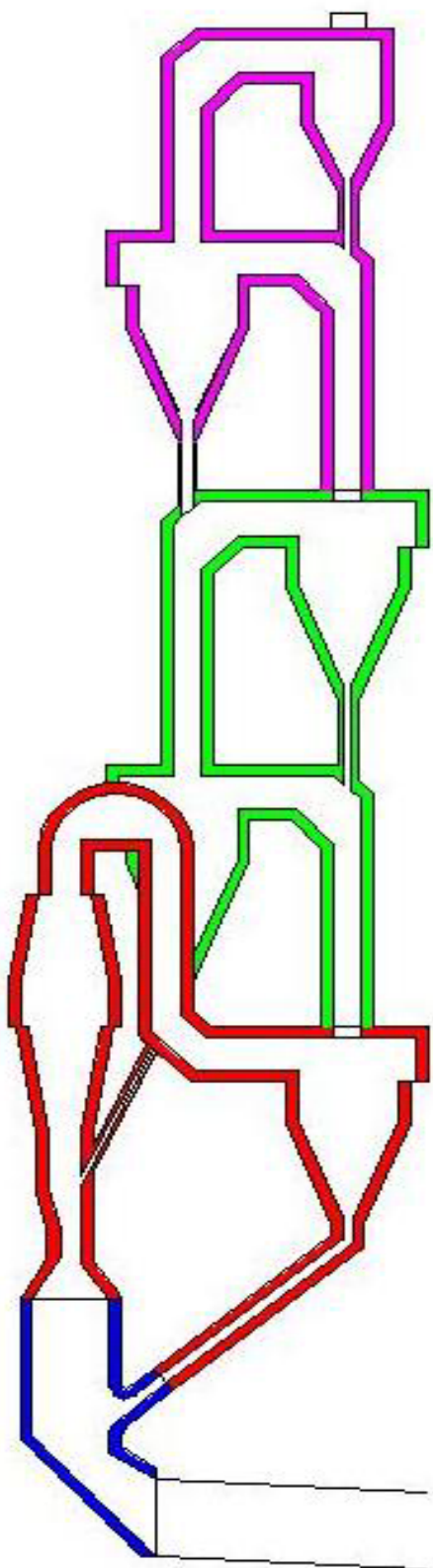
METALLIC AND CERAMIC ANCHORS

ANCORAGGI METALLICI E CERAMICI

Siamo in grado di fornire un'ampia gamma di ancoraggi metallici e ceramici studiati appositamente per il rivestimento refrattario ed isolante di forni industriali. Questi prodotti possono anche essere realizzati su disegno del cliente e rispondono a tutte le esigenze offrendo una perfetta integrazione con la carpenteria del forno.

We offer a wide range of metallic and ceramic anchors tailored to insulating and refractory linings of industrial furnaces. In addition to standard products, we can supply items according to customer's drawings





LICOFEST 28
LICOFEST 37
LICOFEST 32 G TR
MAREF 32 AK
MAREF 34 C



LICOFEST PL 320
BAXOVIBRO VT 336
LICOFEST 32 G TR
MAREF 32 AK
MAREF 34 C



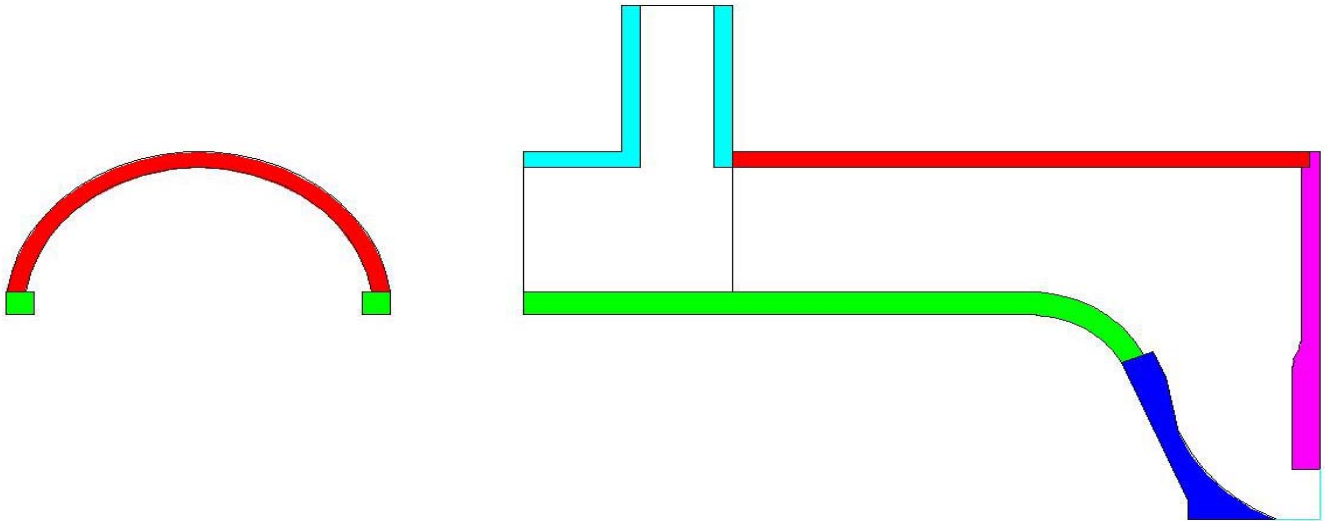
BAXOVIBRO VT 35 SIC
BAXOVIBRO LB SIC
BAXOVIBRO LB SIC 10
BAXOVIBRO VT 35 SIC
LICOFEST 33 G SIC
LICOFEST 33 G TR
LICOFEST SIC V 30 TR
MAREF 42 C
MAREF 44 C



LICOFEST SIC 60 CL
BAXOVIBRO VT ZMX SUPER 0-10
LICOFEST SIC V 30 TR
LICOFEST SIC V 60 TR
LICOFEST Z SIC TR
MAREF CARBO A 5
MAREF 80 C

HEAT EXCHANGER / GRATE PREATHER

SCAMBIATORE DI CALORE / GRIGLIA LEPOL



LICOFEST 28
LICOFEST 37
MAREF 32 AK
MAREF 34 C

BAXOVIBRO VT 336
BAXOVIBRO VT 820
BAXOVIBRO VT 1750

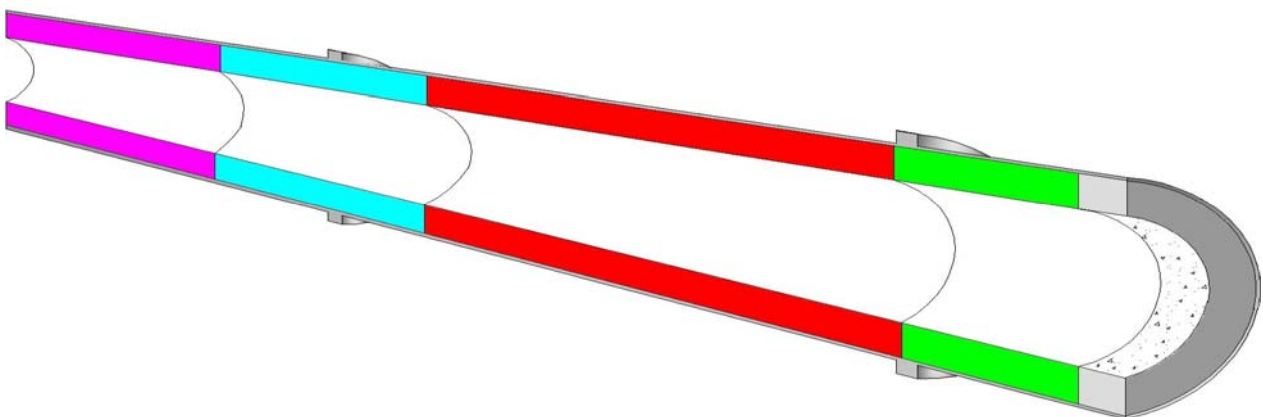
LICOFEST 37
LICOFEST 1600 0-10 QH
LICOFEST 32 G TR
LICOFEST 33 G TR
LICOFEST 33 G SIC
MAREF 42 C
MAREF 44 C

BAXOVIBRO LB SIC
BAXOVIBRO LB SIC 10
LICOFEST 33 G TR
LICOFEST 33 G SIC

BAXOVIBRO VT 35 SIC
LICOFEST SIC 60 CL
BAXOVIBRO VT ZMX SUPER 0-10

ROTARY KILN

FORNO ROTANTE



MAREF 32 AK
MAREF 42 C
MAREF 44 C

MAREF 62 C
MAREF 72 C

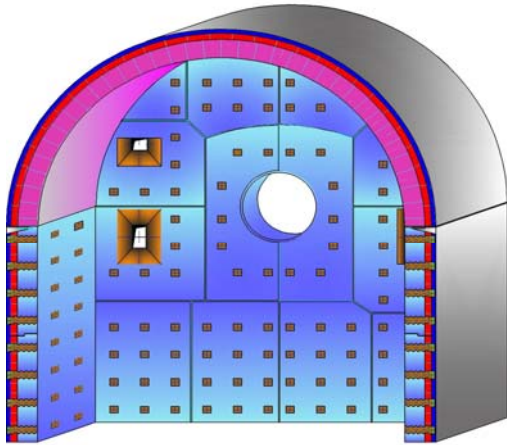
MAREF MC 3
MAREF MC 6
MAREF PERMAL 3
MAREF PERMAL 7

MAREF 80 C
MAREF 80 CB
MAREF 90 CB

LICOFEST KOR 94
BAXOVIBRO VT 1750
BAXOVIBRO TX 95 TAB

FIRING HOOD

TESTATA MOBILE

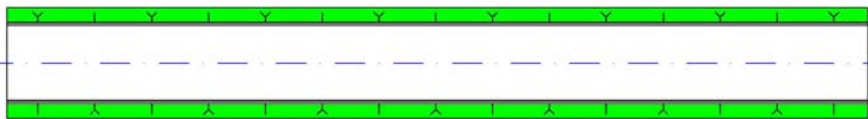


MAREF 62 C
MAREF 72 C

LICOFEST 1600 0-10
BAXOVIBRO LB
BAXOVIBRO LB SIC
BAXOVIBRO LB SIC 10
LICOFEST 33 G TR
LICOFEST AT 65
LICOFEST 33 G SIC

BURNER LANCE

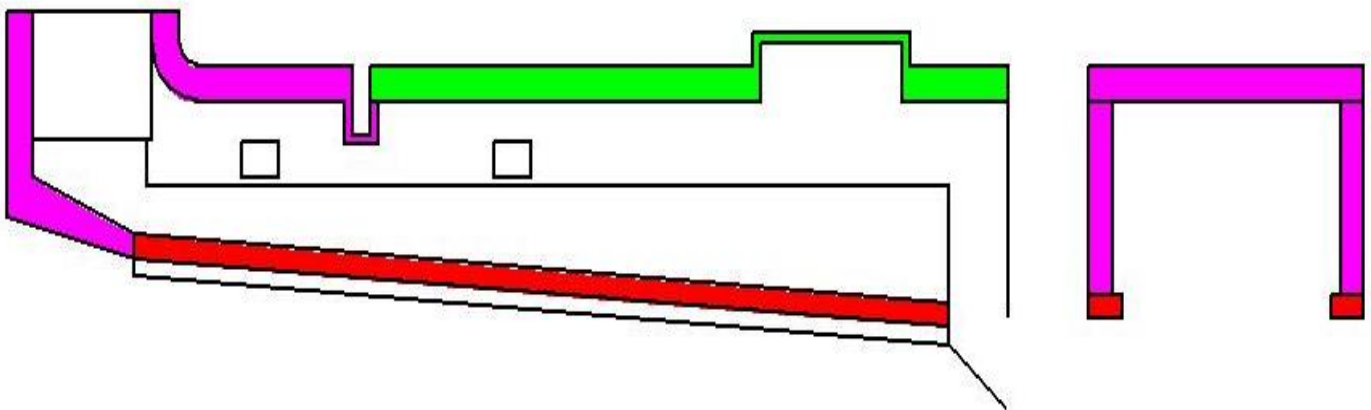
LANCIA BRUCIATORE



LICOFEST KOR 94
LICOFEST 42
KEROFLOW T 04/7
BAXOVIBRO VT 95 TAB

COOLER

RAFFREDDATORE

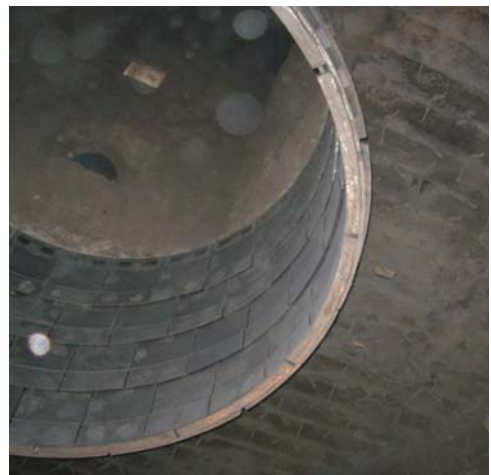


LICOFEST 1600 0-10 QH
BAXOVIBRO LB
BAXOVIBRO LB SIC
BAXOVIBRO LB SIC 10
LICOFEST 33 G TR
LICOFEST 33 G SIC
MAREF 62 C
MAREF 72 C
MAREF 80 C

BAXOVIBRO VT 336
BAXOVIBRO VT 820
BAXOVIBRO VT 1750

LICOFEST 28
LICOFEST 37
LICOFEST 1600 0-10
BAXOVIBRO VT 336
LICOFEST 32 G TR
LICOFEST 33 G TR
MAREF 42 C
MAREF 44 C
MAREF 52 C







EUROPE CORPORATE HEADQUARTERS:
LINCO BAXO group of companies
Via C.Boncompagni, 51/8 / I-20139 Milano
Tel. +39-02-5520041 / Fax +39-02-5694834
E-mail info@lincobaxo.com

